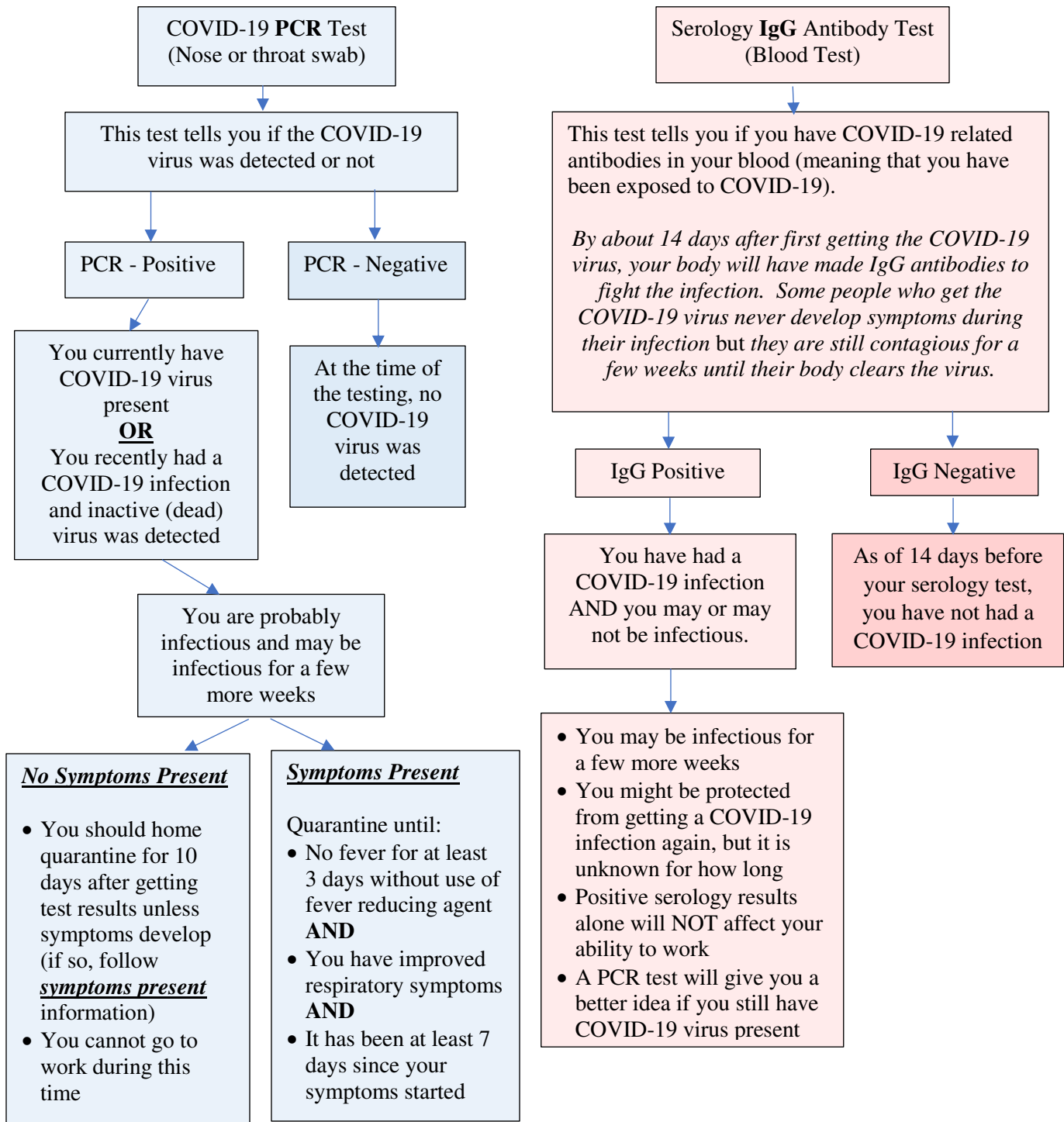


COVID-19 Testing

The ability to know who has the COVID-19 virus and who doesn't provides critical information in determining ways to stop the spread of disease.

There are two COVID-19 laboratory tests available at Winona Health: the COVID-19 PCR test and the Serology IgG Antibody test.



*Since this is a new virus, there are still a lot of unknowns.
This document was prepared with the latest information as of May 1, 2020.*

Test Results		What do the results mean?
PCR	IgG	
+		COVID-19 virus present. Probably infectious.
-		No COVID-19 virus detected.
+	-	COVID-19 virus present. Probably infectious. May be in early stage of infection.
+	+	COVID-19 virus detected. Probably infectious. May be in late stage of infection.
-	-	No COVID-19 virus detected. No IgG antibodies detected. Have not been infected with COVID-19 as of 14 days before the IgG test.
-	+	Currently no COVID-19 virus detected. Indicates prior COVID-19 infection. Low probability of being infectious.
	+	You have had a COVID-19 infection AND may or may not be infectious.
	-	Has not been infected with COVID-19 as of 14 days before the IgG test.

No matter what your test results are, please:

- Practice social distancing: stay at home as much as possible and at least 6 feet from other people if you are in public.
- Avoid contact with people who are sick.
- Wear a mask at work and in public settings where other social distancing measures are difficult to maintain (like grocery stores, pharmacies, etc.). Masks or cloth face coverings can help with preventing your germs from infecting others – especially in situations where you may spread the virus without symptoms.
- Wash your hands often with soap and water for at least 20 seconds, especially after you have been in a public place or after blowing your nose, coughing, or sneezing.
- Cover your mouth and nose with a tissue when you cough or sneeze. Throw used tissue in the trash. If you don't have a tissue, cough or sneeze into your arm or elbow.
- Stay home when sick. If you are sick and need to see your primary care provider or go to urgent care, wear your mask to your appointment.
- If you are a healthcare worker, wear appropriate PPE (personal protective equipment) as indicated.

