

Friday March 19, 2021

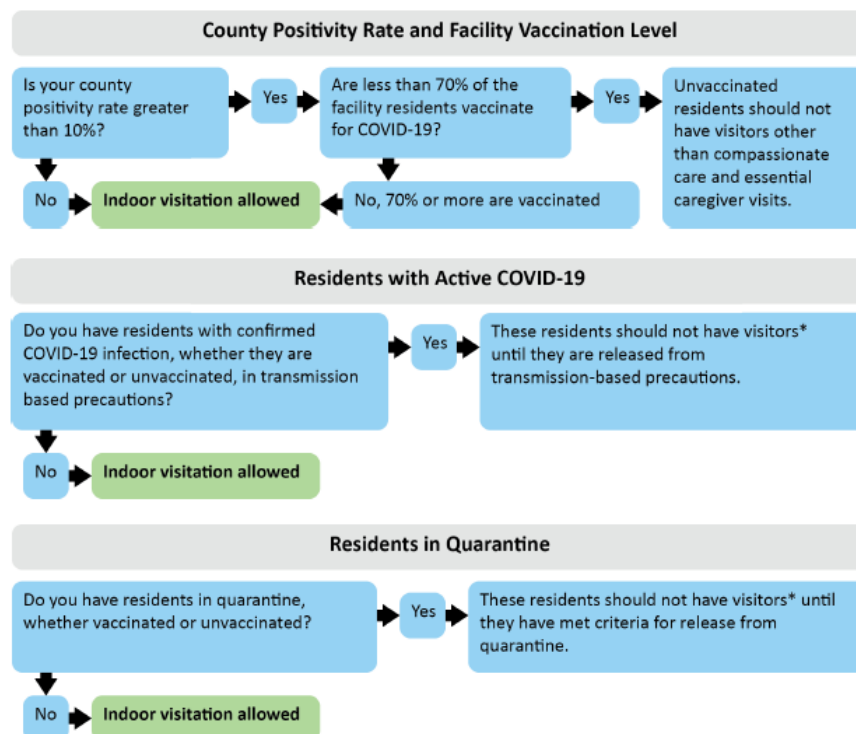
This week MDH have released updated guidance for us for visitation and non-medically necessary outings. Below is an overview on some of the changes. This information can also be found on the Minnesota Department of Health's website: <https://www.health.state.mn.us/diseases/coronavirus/hcp/ltc.html>.

Topic	Fully Vaccinated Individual	Non-Vaccinated Individual
	Definition of fully vaccinated: People are considered fully vaccinated for COVID-19 two weeks after their second dose of a vaccine that requires two doses (like Pfizer or Moderna), or two weeks after they get a single dose of vaccine that requires one dose (like Johnson and Johnson).	Definition of non-vaccinated: People who have not completed all necessary doses of the vaccine, people who are not past the two week point post vaccine, or people who have chosen to not receive the vaccine.
Non-medically necessary outings	<ul style="list-style-type: none"> Do not need to quarantine for 14 days unless they learn they have spent 15 minutes or longer in a 24-hour period, within 6 ft. of someone with COVID-19. May gather indoors or outdoors with other people who are fully vaccinated. Can visit indoors or outdoors with unvaccinated people from a single household who are at low risk for severe COVID-19 infection. Can choose to have close contact (including touch) with the persons they are visiting. 	<ul style="list-style-type: none"> May be required to quarantine when they return from a non-medically necessary outing. Situations vary and will be determined by Administration. For residents who are not fully vaccinated and leave for non-medically necessary outings, we recommend you contact Administration to review quarantine plans.
Good Infection Control Practices to reduce risk of infection	<ul style="list-style-type: none"> Wear a well fitted mask that covers the mouth and nose Stay 6 feet from others (social distancing) when practical Use good hand hygiene 	<ul style="list-style-type: none"> Wear a well fitted mask that cover the mouth and nose Stay 6 feet from others (social distancing) when practical Use good hand hygiene
Attending Place of Worship or other group events, to shop, eat in public establishments	<ul style="list-style-type: none"> Practice good infection control techniques (see above) When county positivity rate is below 5% 	<ul style="list-style-type: none"> May be required to quarantine when they return from a non-medically necessary outing. Situations vary and will be determined by Administration. Practice good infection control techniques (see above) When county positivity rate is below 5%

Testing	<ul style="list-style-type: none"> Follow the facility plan for testing 	<ul style="list-style-type: none"> Follow the facility plan for testing
Inside Facility Dining and Activity Guidance	No Changes at this time	No Changes at this time
Indoor Visitation – when County positivity rate is less than 10%	<ul style="list-style-type: none"> Limited visitor movement in the facility Visitors and residents follow the core principles of COVID-19 infection prevention (see above) Can choose to have close contact (including touch) with their visitor while wearing a well fitted mask and performing good hand hygiene before and after. 	<ul style="list-style-type: none"> Limited visitor movement in the facility Visitors and residents follow the core principles of COVID-19 infection prevention (see above)
Topic	Vaccinated Individual	Non-Vaccinated Individual
Residents with active COVID-19	<ul style="list-style-type: none"> Transmission based precautions enforced No visitation Resident remains in Apartment 	<ul style="list-style-type: none"> Transmission based precautions enforced No visitation Resident remains in Apartment
Residents in Quarantine	<ul style="list-style-type: none"> Limited Visitation - Approved Compassionate Care and Essential Care visits allowed 	<ul style="list-style-type: none"> Limited Visitation - Approved Compassionate Care and Essential Care visits allowed

The decision trees below provide paths for visitation decisions.

LONG-TERM CARE VISITATION GUIDANCE FLOWCHART
FOR EXCEPTIONS TO INDOOR VISITATION



*Note: Compassionate care visits, essential caregivers, and visits required under state and federal disability rights laws, should be allowed at all times, regardless of a resident's vaccination status, the county's COVID-19 positivity rate, or an outbreak.